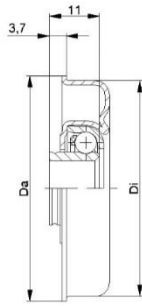


RG 1200 Series AX8 (Female Thread) Rollers for manual handling – **BZP STEEL**



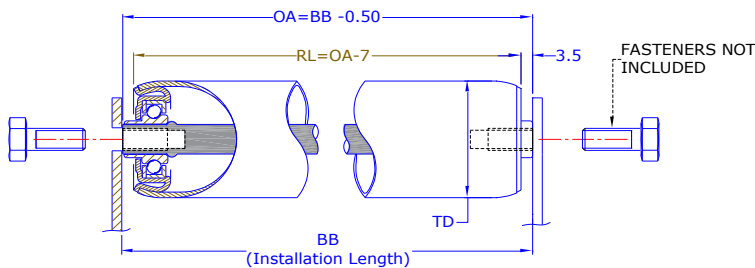
RG 1200 series are general purpose steel rollers with Greased bearings for medium to heavy manual applications

Found in >	MATERIAL	TUBE EXTRAS
Manual Conveyors	Zinc Plated (BZP) tube Steel bearings & Steel axles	BS 54 OR BS60 Sleeve RG50MD ONLY
Despatch Areas		Bonded Rubber
Airports		Polyurethane
Packing Lines		O Ring grooved

Roller Type	Roller Diameter	Female Thread available	Axle code Followed by thread	Bearing Type +Housing	Load Capacity†
RGM50AX8X-XXX BB	Ø50 x1.5 wall	M8x16 M10x24	AX88 / AX810 /	MTR50 .30+steel	120kgF udl
RGM50MDAX8X-XXX BB	Ø51 x2 wall	M8x16 M10x24	AX88 / AX810 /	MTR50 .30+steel	120kgF udl
RG60MDAX8X-XXX BB	Ø60 x2 wall	M8x16 M10x24 M12x30	AX88 / AX810 / AX812	MTR60 .30+steel	160kgF udl
RG80MDAX8-X-XXX BB	Ø80 x2 wall	M8x16 M10x24	AX88 / AX810 /	MTR80 .30+steel	180kgF udl

M2M ORDER CODE AXLE DIA FOLLOWED BY OB & OA (EXAMPLE **RG80MDAX810-340 BB**)

IMPORTANT: Load Capacity calculated on standard lengths. Please ask to confirm advisable load on quotation/order.



Bearing housing: steel swaged

Lubrication Greased

Temp range -20c +120C

Weight class Medium to Heavy

Conveyor Roller; Customs Code 8428399000

COO (Country of Origin): **UK**

Roller Type (ie RG50MD)	
Installation Width (BB)	
Axle A & shape	
Over bosses* (OB)	
Over Axle8 (OA)	
Quantity Required	
*leave blank if rollers are to suit installation width (BB)	



Company Name and address:-

Signed.....Print.....

Date: Purchase order No.....

Collect or Send by Carrier – circle as appropriate

Comments:

Please sign & return Order