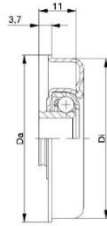


RG 800-AX1 Series (Spring loaded axles) rollers for manual handling –BZP STEEL

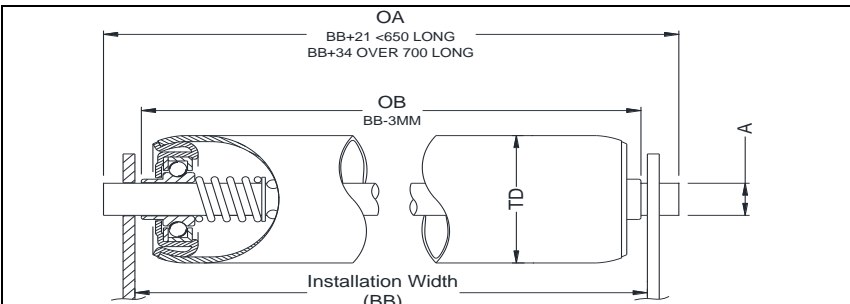


RG series rollers are general purpose steel rollers with oiled free rolling (cup & cone) style bearings for manual/gravity applications

Found in >	MATERIAL	TUBE EXTRAS
Manual Conveyors	Zinc Plated (BZP) tube	NON-MARKING B45 SLEEVE– RG-40 ONLY BS54 /BS60 Sleeve **RG50 only
Despatch Areas	Steel axles	Bonded Rubber
Airports		Polyurethane
Packing Lines		

Roller Type	Roller Diameter	Axle round	Axle Hexagonal	Bearing Type +Housing	Load Capacity†
RG30-X-XXX- XXX-AX1	Ø30 x1.5 wall	Ø8 Ø10	-	MTR30.16+steel	25kgF udl
RG40-X-XXX- XXX-AX1	Ø40 x1.5 wall	Ø8 Ø10 Ø11 Ø12	11H	MTR40.20+steel	50kgF udl
RG50-X-XXX- XXX-AX1	Ø50x1.5 wall	Ø8 Ø10 Ø11 Ø12	11H	MTR50.20+steel	80kgF udl
RG50MD-X-XXX- XXX-AX1	Ø51 x2 wall	Ø8 Ø10 Ø11 Ø12	11H	MTR50.20+steel	80kgF udl
RG60-X-XXX- XXX-AX1	Ø60 x2 wall	Ø10 Ø11 Ø12	11H	MTR60.20+steel	80kgF udl

† Load Capacity calculated on standard lengths & axle fixing. Please ask us to confirm advisable load on quotation/order



Roller Type (ie RG-50)	
Installation Width (BB)	BB
Axle A	Ø H
Quantity Required	
OB (over bearing boss*)	
OA (over all axle length*) or L	
*leave blank if rollers are to suit installation width (BB)	

Bearing housing: steel swaged

Ball Cage: Plastic

Lubrication Oiled

Temp range -0c +60C

Weight class Light to Medium

Conveyor Roller; Customs Code 8428399000



M2M ORDER CODE AXLE DIA FOLLOWED BY OB & OA (EXAMPLE RG40-12-340-380-AX1 (ROUND AXLE 12 OB=340 OA=380)

Company Name and address:-

Signed.....Print.....

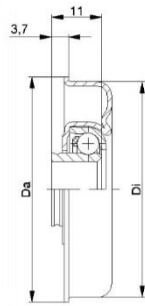
Date:

Purchase order No.:

Collect or AED to despatch – circle as appropriate

Please sign & return Order

RG 1200 AX1 Series (Spring loaded) Rollers for manual handling –BZP STEEL



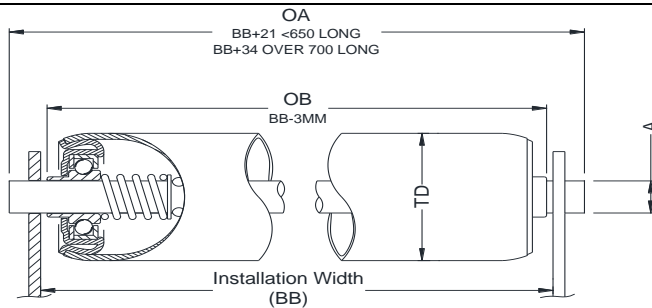
RG 1200 series are general purpose steel rollers with Greased bearings for medium to heavy manual applications

Found in >	MATERIAL	TUBE EXTRAS
Manual Conveyors	Zinc Plated (BZP) tube Steel bearings & Steel axles	BS 54 OR BS60 Sleeve RG50MD ONLY
Despatch Areas		Bonded Rubber
Airports		Polyurethane
Packing Lines		O-Ring Grooved

Roller Type	Roller Diameter	Axle round	Axle Hexagonal	Bearing Type +Housing	Load Capacity†
RGM50-X-XXX-XXX-AX1	Ø50 x1.5 wall	Ø10 Ø12 Ø14	11H	MTR50 .30+steel	120kgF udl
RGM50MD-X-XXX-XXX-AX1	Ø51 x2 wall	Ø10 Ø12 Ø14	11H	MTR50 .30+steel	120kgF udl
RG60MD-X-XXX-XXX-AX1	Ø60 x2 wall	Ø10 Ø14 Ø15	-	MTR60 .30+steel	160kgF udl
RG80MD-X-XXX-XXX-AX1	Ø80 x2 wall	Ø12 Ø14 Ø15	-	MTR80 .30+steel	180kgF udl

M2M ORDER CODE AXLE DIA FOLLOWED BY OB & OA (EXAMPLE **RG80MD12-12-340-380-AX1**)

IMPORTANT: Load Capacity calculated on standard lengths. Please ask to confirm advisable load on quotation/order.



Bearing housing: steel swaged
Lubrication Greased
Temp range -20c +120C
Weight class Medium to Heavy
Conveyor Roller; Customs Code 8428399000



Roller Type (ie RG60MD)	
Installation Width (BB)	
Axle A & shape	
Over bosses* (OB)	
Over Axle8 (OA)	
Quantity Required	
*leave blank if rollers are to suit installation width (BB)	

Company Name and address:-

Signed.....Print.....

Date: Purchase order No.....

Collect or Send by Carrier – circle as appropriate

Comments:

Please sign & return Order

