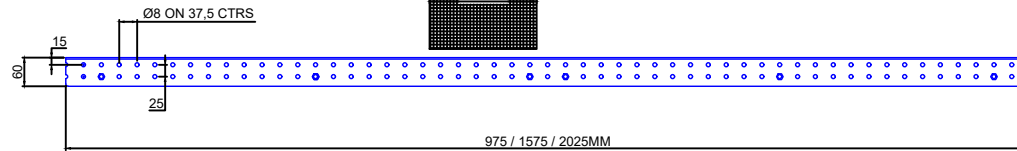
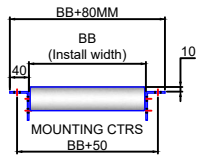


INSIDE FRAME WIDTH →  
 FRAME TYPE →  
 ORDERING CODE: GTLA- **BB-**    
 ENTER BZP /PVC  
 (BZP=ZINC STEEL PVC= PLASTIC)

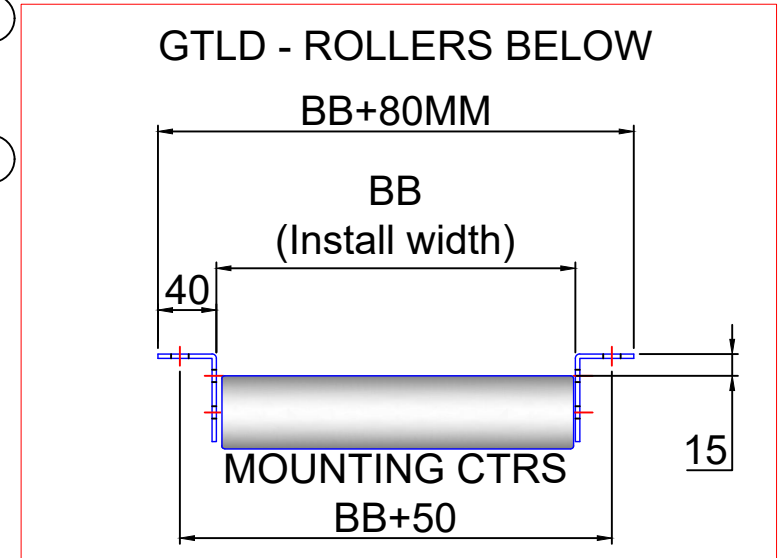
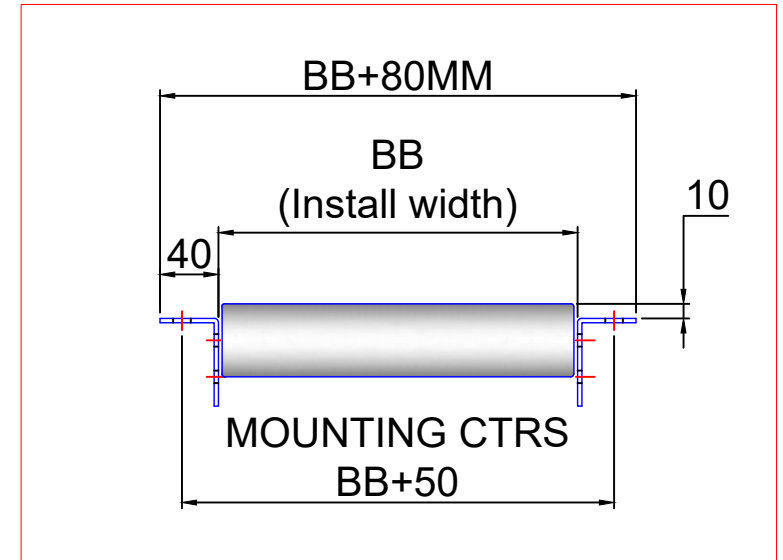
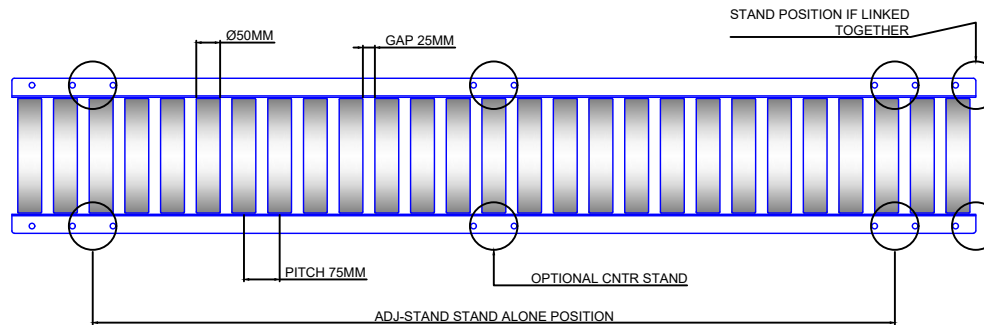
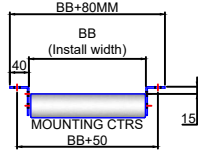
FRAME LENGTH 10 / 16 / 20  
 (975=10 1575=16 2025=20)

SMALLEST PRODUCT LENGTH

GTLA - ROLLERS ABOVE



GTLD - ROLLERS BELOW



FINISH	BZP FRAMES - OPTIONAL POWEDER COAT
MATERIAL	3MM THICK PRE-GALV
HEAT TREATMENT	----
LUBRICATION	---