

# Medium /Heavy Duty Gravity Conveyor Track

Series type: HD5

HD5 is our <1300kg UDL Steel gravity track

Fitted with IR Series or PR Series or RG60MD rolls:-  
 Ø51, Ø60, Ø63.5, Ø70, Ø76, Ø80, Ø89MM



HDS FRAME - BZP FINISH - 80x40 x5  
 FITTED WITH ROLLERS PR OR IR SERIES SODIA - Ø80x14

Frames are manufactured in robust steel 5mm thick with double fold for <1300kgf UDL/linear meter – subject to width, rollers & mounting supports.

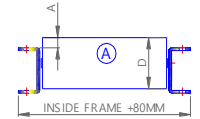
Frames are zinc plated (BZP) as standard or, as optional extra, powder coated to custom colour. Frames also available stainless steel subject to quantity.

Frames stocked for convenient shipping:-

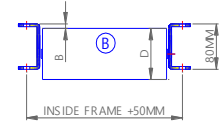
2025mm, 2400mm **new 3000mm** long with roller pitch divisible 75mm. Remember, your roller Ø must be less than roller pitch. Ie Ø76 roller pitch= 150 or more

ROLLER Dia	A (MM)	B (MM)
51	3	31
60	7	27
63.5	8.75	25.25
70	12	22
76	15	19
80	17	17
89	21.5	12.5

ROLLERS ABOVE FRAME A



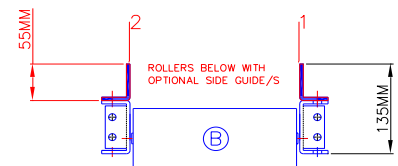
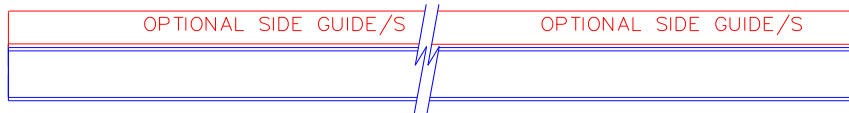
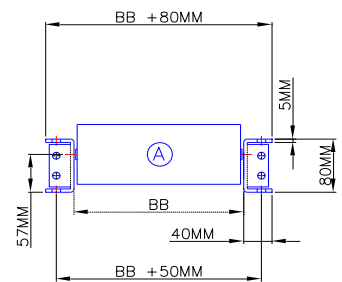
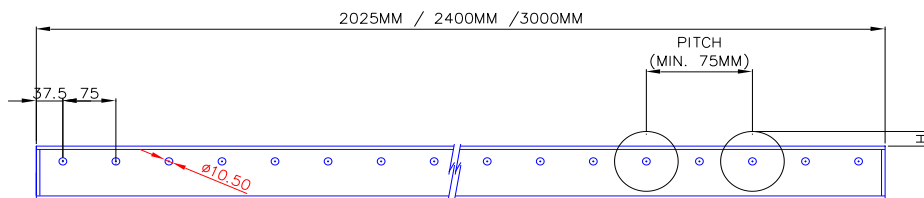
ROLLERS BELOW FRAME B



Track widths are to customer requirement; simply tell us conveyor width and the product length & weight and we will manufacture to suit.

Inside Frame	Roller Pitch (if know)	Number of Meters required (eg 12 x2m)	Frame Position (A or B)	Roller Diameter	Side Guide Yes/No and 1 side or both (1 or 2)		Product Length & Weight
					Yes/No	1 or 2	
MM	MM	M		Ø			KG
MM	MM	M		Ø			KG
MM	MM	M		Ø			KG
MM	MM	M		Ø			KG

Frame A, rollers (\*except Ø50) sit above frame.  
 Frame B, all rollers sit below frame.



Company Name and address:-

Signed.....Print.....

Date:

Purchase order No.:

Collect or AED to despatch – circle as appropriate  
 Comments: