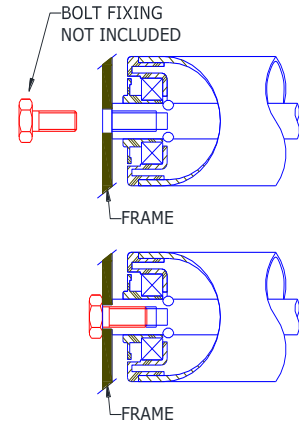
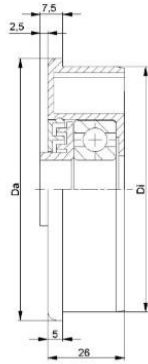
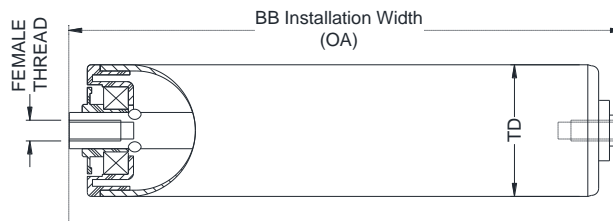


# KTR-Universal -AX8 (Female Thread) Bolt-in rollers for Under Belt / Gravity



Roller Type	Roller Diameter	Tube Material			Female Thread available	Maximum Length	Load Capacity†
		BZP	SS	PL			
PR-35	Ø35 x1.2	●	●	●	M5x10   M6x12	1000MM	60kgF udl
SSPR-35	Ø35 x1.2	●	●	●	M5x10   M6x12	1000MM	60kgF udl
PR-40	Ø40 x1.5	●	●	●	M6x12   M8x16	1400MM	80kgF udl
PRP-40	Ø40 x2.0	●	●	●	M6x12   M8x16	750MM	25kgF udl
SSPR-40	Ø40 x1.5	●	●	●	M6x12   M8x16	1400MM	80kgF udl
PR-50KTR	Ø50 x1.5	●	●	●	M6x12   M8x16   M10x20	1600MM	140kgF udl
PRP-50	Ø50 x2.8	●	●	●	M6x12   M8x16   M10x20	750MM	40kgF udl
SSPR-50	Ø50 x1.5	●	●	●	M6x12   M8x16   M10x20	1600MM	140kgF udl
PR-60KTR	Ø60 x2	●	●	●	M6x12   M8x16   M10x20	2000MM	160kgF udl
PRP-60	Ø60 x3	●	●	●	M6x12   M8x16   M10x20	1000MM	60kgF udl
SSPR-60	Ø60 x2.5	●	●	●	M6x12   M8x16   M10x20	2000MM	160kgF udl
PRP-63	Ø63.5 x4	●	●	●	M8x16   M10x20   M12x26	1000MM	60kgF udl
SSPR-63	Ø60 x2.6	●	●	●	M8x16   M10x20   M12x26	2000MM	330kgF udl
PR-80KTR	Ø80 x2	●	●	●	M8x16   M10x20   M12x26	2000MM	330kgF udl
SSPR-803	Ø80 x3	●	●	●	M8x16   M10x20   M12x26	2000MM	350kgF udl
PR89KTR	Ø89x3	●	●	●	M8x16   M10x20   M12x26	2100MM	430kgF udl
PRP-90HD	Ø89x7	●	●	●	M8x16   M10x20   M12x26	1600MM	100kgF udl

IMPORTANT: †Load Capacity calculated on standard lengths. Please ask to confirm advisable load on quotation/order



Roller Type or Tube Ø=	Material: BZP, SS or PL (circle)
Installation Width (BB)=	Quantity Required=
Female Thread size=	Load Capacity Required=
Comments	

Company Name and address:-

Signed.....Print.....

Date: Purchase order No.....

Collect or Send by Carrier – circle as appropriate

Comments:

Please sign & return Order