

CDR 3900 10B-1 Heavy duty Sprocket Rollers 650kgf



CDR 3900 INDUSTRIAL

5/8" pitch (10B-1) Chain Driven Rollers CDR3900

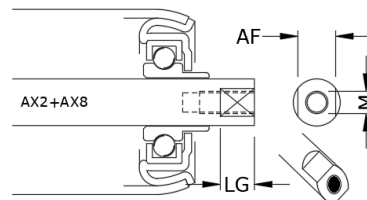
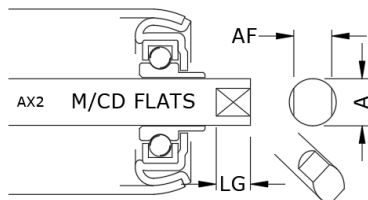
FEATURES

CDR3900 10B rollers are for 010b chain driven conveyor and are fitted with simple or double steel sprocket. These rollers are for chain driven conveyor such as: Heavy duty pallet distribution Indoor /out door Cold Store* please clearly state on enquiry/order if required for cold storage with ambient working temperature. Rollers are fitted with welded steel sprockets for fixed drive and have minimum tube thickness 3mm. Roller finish is generally BZP steel. Other options include: Black Oxide Self-Colour steel Stainless (excludes sprocket) Rubber covered Optional Extras Pallet guide discs – see sheet BS guide disc

Phil Bevan

CDR 3900 Series have female thread (AX8). To alter thread diameter: AX8 Followed by thread size. Ordering code Roller Ref. suffixed by your OA or BB (BB= installation length)

Other axle executions, such as machined open flats (AX2) are available on special request. See below



M/CD FLATS & FEMALE THREAD

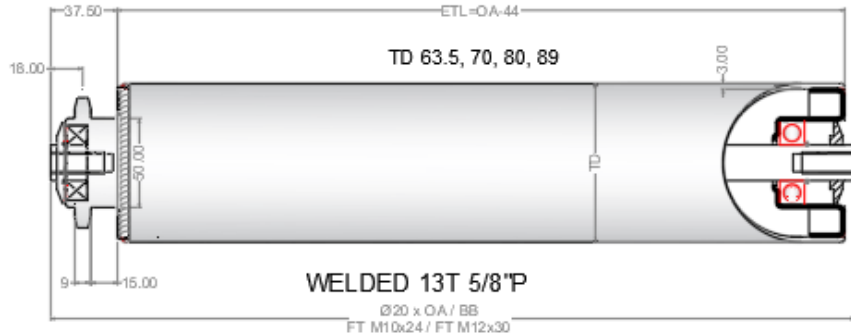
CDR 3900 10B-1 Series Heavy duty Sprocket Rollers



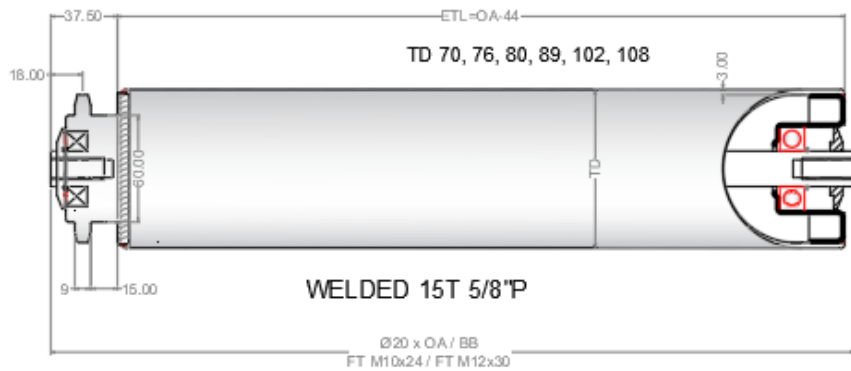
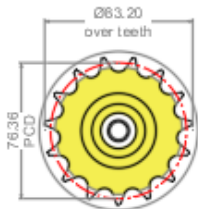
BZP Steel tube & sprocket, heavy-duty chain driven rollers

Welded Steel Sprocket | Steel housed Precision Bearings | Side Loading with rounded/swaged End
 Construction: Roller shell precision machined ends to accept deep groove bearings & through axle
Optional Extra: Rubber / Carboxy / PU tube covering

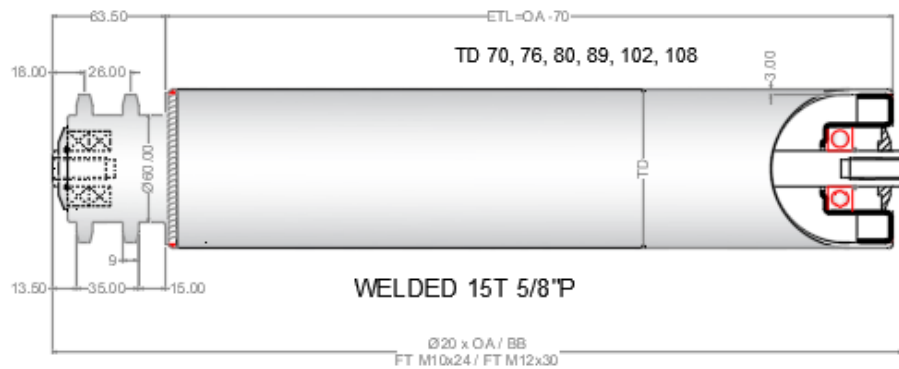
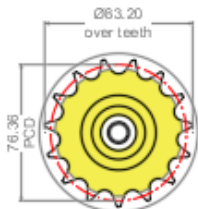
13T 5/8" P (10B CHAIN)
 (Z13 5/8P)



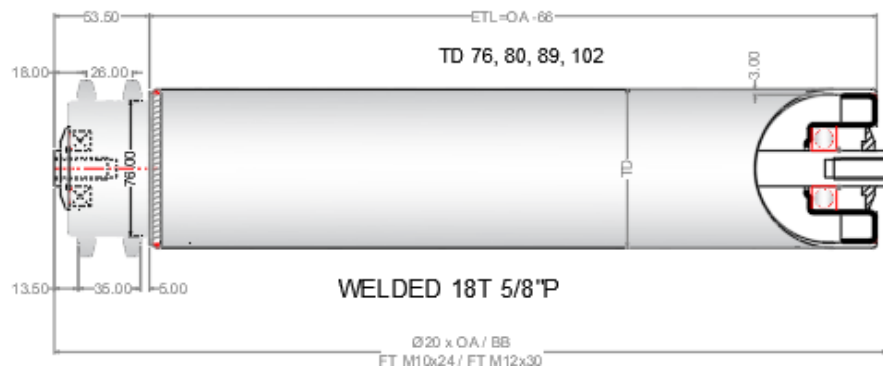
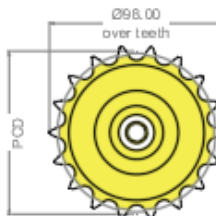
15T 5/8" P (10B CHAIN)
 (Z15 5/8P)

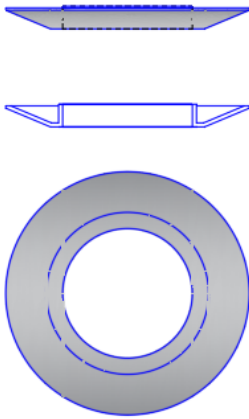


15T 5/8" P (10B CHAIN)
 (Z15 5/8P)

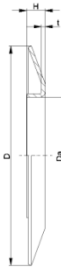


18T 5/8" P (10B CHAIN)
 (Z18 5/8P)





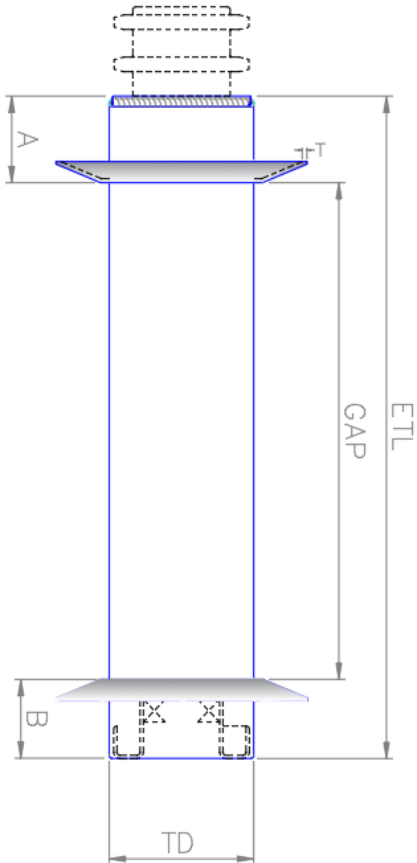
BS-TD-150 GUIDE DISC



| BS | | | | |
|------------|---------|-----|--------|-----|
| Type | Da ±0.1 | D-2 | H ±0.5 | t |
| BS-50-130 | 49.9 | 130 | 10 | 1.5 |
| BS-40-130 | 59.9 | 130 | 10 | 1.5 |
| BS-80-150 | 79.9 | 150 | 14 | 2.5 |
| BS-99-150 | 89.9 | 150 | 14 | 2.5 |
| BS-108-150 | 107.9 | 150 | 14 | 2.5 |

Other dimensions on request!

• Wheel Flange: Steel



PALLET GUIDE DISC

Press Steel pallet guide disc /s can be welded to tube TD.

In extreme conditions AED can also manufacture from solid a more heavy duty disc to prevent the risk of collapse during top loading.

Please use this sheet with your enquiry so that we can confirm positions are acceptable.

COO (Country of Origin): **UK**

Manufacturer: **AED Rollers Ltd**

Manufactured in accordance to Quality Accreditation **ISO 9001:2005**



Product Details

Conveyor Roller with Sprocket; Customs Code 84832000, Heavy duty

CDR series rollers feature welded tube with machined sprocket fitted with precision deep groove bearings & captivated axle.

These are heavy-duty conveyor rollers designed for high loads & extended life.

Features:

- Welded fixed drive sprocket
- High conveyor Speeds <1.2m/s
- Internal deep groove steel bearings
- High Strength – see product files for further information
- Ambient temperature range -25C +80C
- Anti-Static Design
- Default Tube condition – Bright zinc plate & clear passivate Zn6 (BZP)

Specifications

| Attribute | Value |
|-------------------------|--------------------------------|
| Tube Material | CHS S235 JRH/ ERW E220 +CR2 S2 |
| Roller Diameter | As order |
| Sprocket | Fixed welded 5/8p”(10B-1) |
| Inside Frame Width BB | As order |
| Surface treatment | As order |
| Axle Fixing Type | Female Thread Metric Coarse |
| Axle Material | Steel |
| Female thread size | As order |
| Maximum Conveying Speed | 1.2m/s <1000mm BB |
| Weight Class | Heavy Duty |