

Machined Drums/Pulleys



UNDER BELT DRIVEN



MACHINE TURNED

Conveyor Drums (pulleys) include a cylindrical shell (crowned or parallel), end discs supported within the shell and a fixed shaft - plain or with keyway.

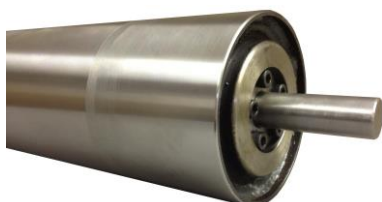
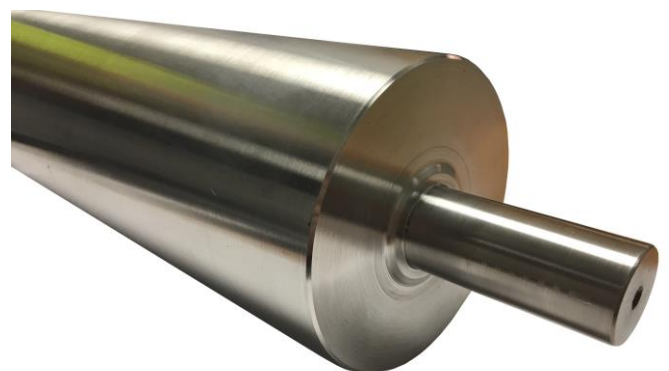
Machined Rollers include a cylindrical shell (crowned or parallel), end discs with integral bearings supported within the shell & a captivated shaft. Both roller types are designed for demanding applications where high loads or continuous use is required. Rollers are usually despatched in 7 working days.

Drums/Rollers are machined from Mild Steel, Stainless & Mild steel Mix

DESIGN:-

Smooth machined surfaces provide maximum belt protection.

1. Hubs and end disc are accurately machined to ensure concentricity.
2. Drums or Machined rollers are available with a parallel or crowned face.
3. Normally shafts have taper lock bushing for ease of maintenance and offer superior performance to that of welded shafts.
4. Lagging (rubber/polyurethane covering) is usually provided to increase traction between belt and pulley.
5. Drum diameters include: 60mm, 76mm, 89mm; 95mm; 101.6mm; 108mm; 114mm; 121mm; 127mm; 133mm; 139mm; 146mm; 152mm; 159mm; 168mm; 177.8mm; 193.7mm; 203mm; 219mm; 229mm; 244mm & 254mm.



AED Premium Quality
Products. British made

5.0 ★★★★★

Quantity Assured: ISO 9001:2015 Accredited

Bespoke Rollers: Made To Measure

Gravity Modular Conveyors (non-powered)



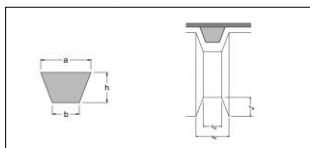
Template for Steel Machined Drums



UNDER BELT DRIVEN



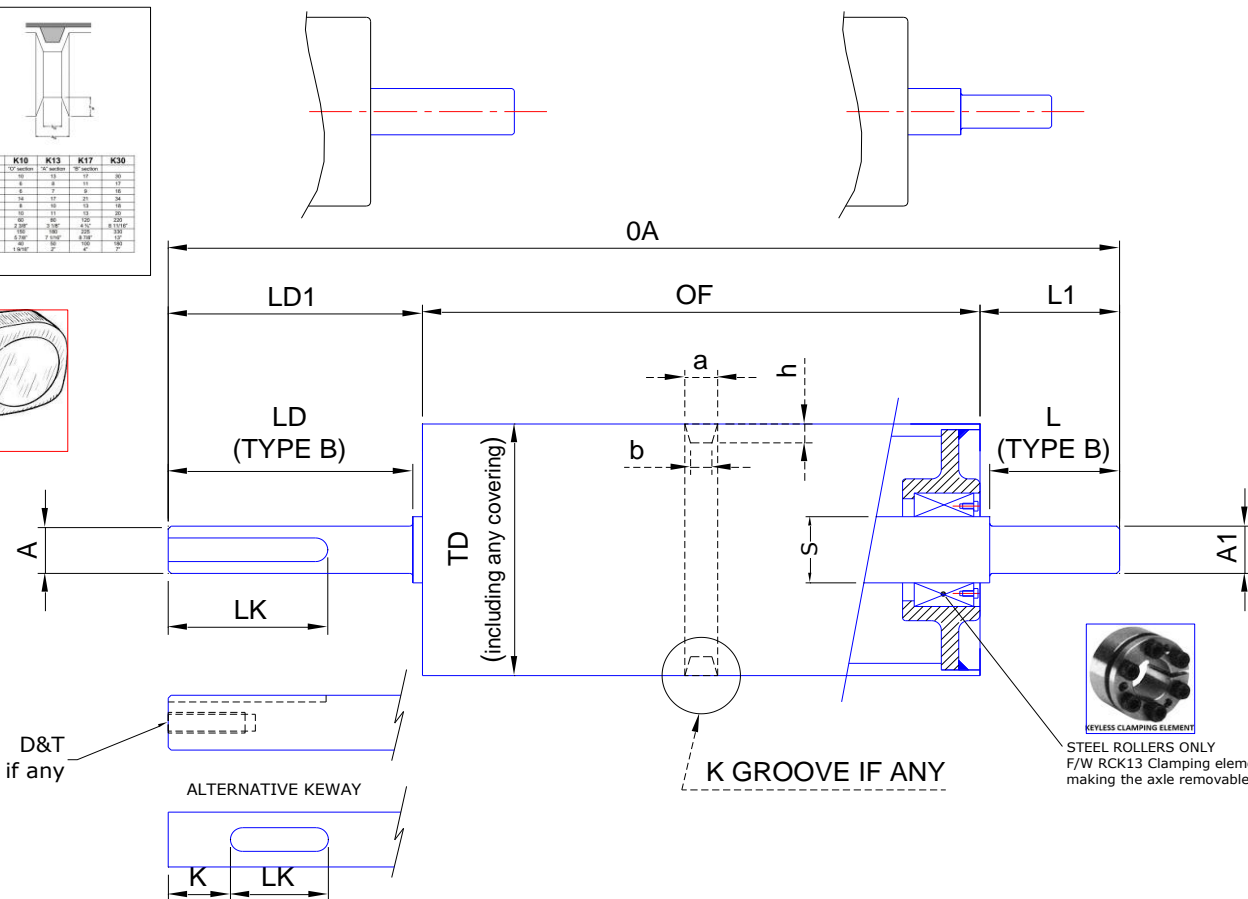
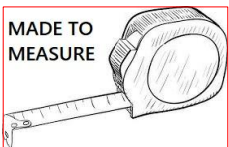
MACHINE TURNED



Type	K6	K8	K10	K13	K17	K30
Profile	a	a	a	2x b	2x b	2x b
Dimension	10	12.5	15	18	22	30
Length	8	10	12.5	15	18	22
Depth	2.5	3	3.5	4.5	5.5	7
Max Roller Diameter (mm)	8	10	12.5	15	18	22
Max Roller Width (mm)	8	10	12.5	15	18	22
Min Roller Diameter (mm)	3.5	4.5	5.5	6.5	8	10
Min Roller Width (mm)	3.5	4.5	5.5	6.5	8	10
Min Roller Length (mm)	3	3.5	4.5	5.5	6.5	8
Min Roller Thickness (mm)	3	3.5	4.5	5.5	6.5	8
Min Roller Weight (mm)	3	3.5	4.5	5.5	6.5	8
Min Roller Density	KN	KN	KN	KN	KN	KN
Min Roller Price	1.500	2.000	2.500	3.500	4.500	6.000

AXLE TYPE A - ENDS NOT MACHINED

AXLE TYPE B - ENDS MACHINED TO REDUCED DIAMETER



Quantity: _____					
Tube Details:-					
Tube Material (circle):					
Mild Steel	Stainless Steel				
Tube Condition (circle):					
Parallel	Crowned				
Tube Diameter (TD):	ø _____ mm				
(include any covering)					
Over Face (OF):	_____ mm				
Rubber Lagging (circle):	YES NO				
If YES, what rubber thickness?	_____ mm				
Grooved (circle):	YES NO				
<i>only possible if rubber covered</i>					
Groove Type (circle):					
<i>See table above for 'K' dimensions</i>					
K6	K8	K10	K13	K17	K30
OR if groove not defined in 'K' table, please advise your bespoke groove dimensions:					
a: _____ mm	b: _____ mm	h: _____ mm			
Axle Details:-					
Axle type A (ends not machined)					
A= ø	LD1=	L1=	OA=		
Keyway yes/no					
LK=	K=	D&T=			
Axle type ends B (1 end or both ends machined)					
S= ø	A= ø	A1= ø	OA=		
LD1=	LD=	L1=	L=		
Keyway yes/no					
LK=	K=	D&T=			
Axle material: Mild Steel / Stainless G303 /G316					