

### ROLLER DATA

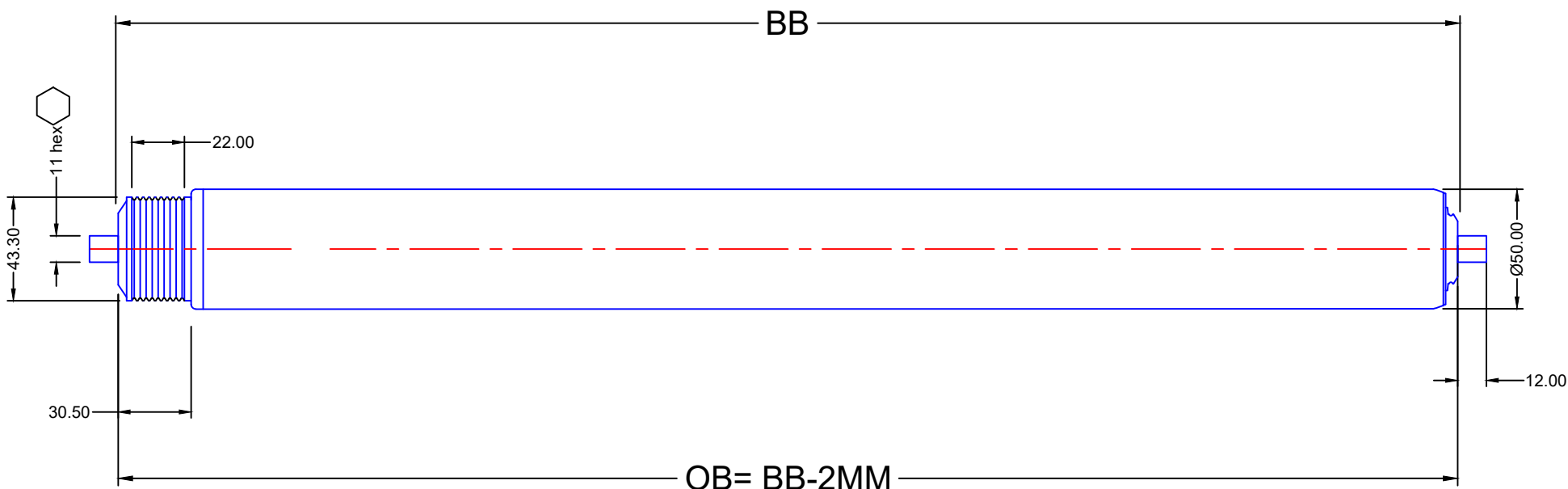
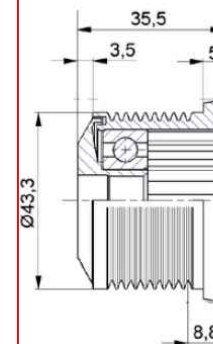
SPEEDS <70 M/MIN.

ANTI-STATIC DESIGN

PRECISION 6202 BRGS

UD Load rating in KG Force, based on BB (installation size in MM):-

147KG <700BB | 85KG @ 800BB | 70KG @ 1000BB | 44KG @ 1200BB | 30KG @ 1400BB



Replacing the six typical technologies used in the conveyor systems:  
 flat belt, round belt, timing belt, twisted belt, tangential belt and chain

FINISH	Z/PLATE
MATERIAL	MILD STEEL/ POLYMER
HEAT TREATMENT	AS PER BRGS SUPPLIED
LUBRICATION	AS PER BRG SUPPLIED

ORDERING CODE: POLYV5011HAX1-  BB

INSTALLATION LENGTH (BB)