

ADJ3 STAND WITH CASTORS



Installation & operating instructions

Remove packaging. If the conveyor was shipped in two or more sections they will need to be connected using the stand smileybracket (see diagram)

If supplied. Fit accessories securely.

Stands are for Gravity Flow or set Parallel and adjust to within operational the height stated, using stand cross-tie M.

For gravity flow (camber), lock stand upright to using smileybracket "Smile" & bottom location holes, set infeed height then adjust out-feed height to give desired flow.

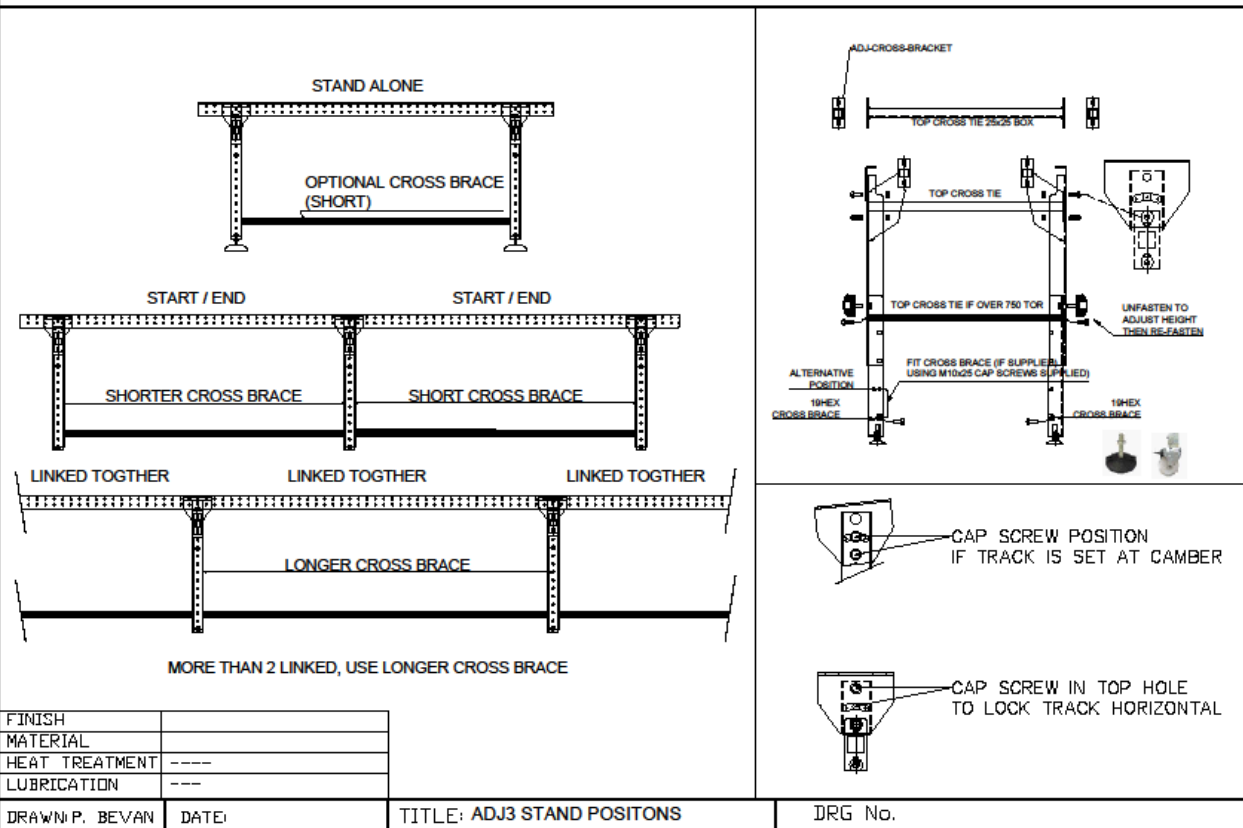
For Parallel (horizontal): Lock stand upright using top & bottom smileybracket location holes

If supplied with castors, unlock each castor and move the conveyor to the working area and lock the castors when conveyor is in place.

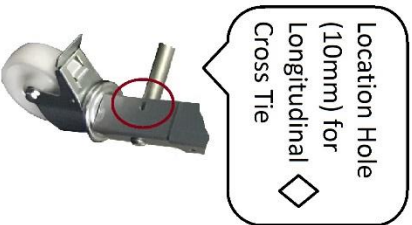
Adjustable conveyor supports (stands / legs)

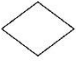




DRG No. STAND_POSITIONS_CW_CROSSBRACE

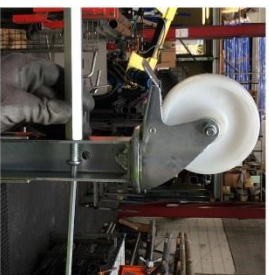



- Conveyor supports with adjustable feet give precise operating height
- Conveyor supports with **castors*** will be adjustable in 34mm increments



-  17mm (11/16") hexagonal cross tie
-  20mm (7/8") round bottom cross tie
-  Height Adjustment Knob

STAGE 1: FIT  **CROSS TIE**



STAGE 2: FIT  **BOTTOM CROSS TIE**



ADJ-STAND-R-CASTOR-700-1000

BOTTOM CROSS TIE

